

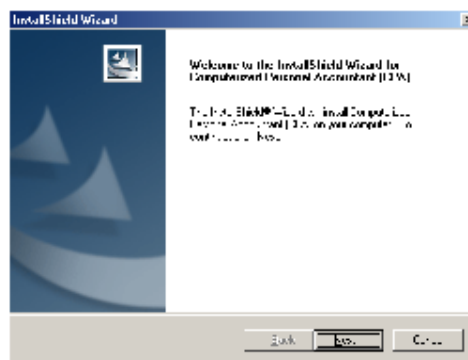
Step I- CPA Windows Uninstall

You must first properly uninstall the current CPA Windows program from your computer, before installing the new version. If you have not yet installed CPA Windows you may skip to Step III.

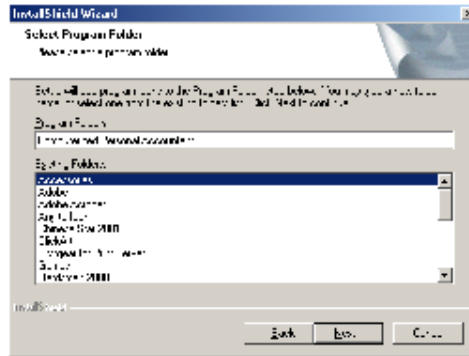
- 1) Exit all Windows programs.
- 2) Put the CPA Windows CD in your CD-ROM Drive.
- 3) If the install program doesn't startup within a minute;
Click <Start>, click <Run>, and then click <Browse>.
- 4) Click on the drop down box beside the Look In section and click on your CD-ROM drive.
- 5) Double click on the **Setup.exe file**, and then click <OK>.
- 6) The Install Shield window will appear.
- 7) Click on the <Remove> button on the lower left side of the window.
- 8) Click the <Next> button.
- 9) This will bring up a message "Do you want to completely remove the selected application and all of its components?" Click <OK> to delete the old version of CPA Windows.
- 10) You may see a message "Shared File Detected". Click the check box "Do not display this message again." And then click <YES>.
- 11) A Maintenance Completed message will appear.
- 12) Click the <Finish> button at the bottom.

Step II. - CPA Windows Install

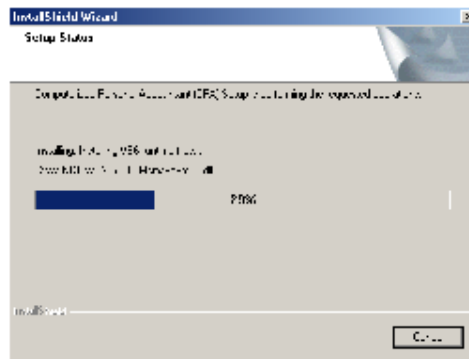
- 1) Install the Windows program using the CD provided. When you put in the CD, it should start running the install (It may take 10-15 seconds to start the install). If not, go to the start button on your desktop, where all your icons are and click it. Go to run and type the drive letter for your CD-ROM drive and then "\Setup.exe". Then click <OK> to continue with the installation. This is the first screen that you will see.



- 5) You may select a folder name next. The folder will be named Computerized Personal Accountant unless you indicate otherwise. We recommend using the default.



- 6) The program will begin installing files and will show a progress bar, which indicates how long the installation process, will take.



- 7) When Setup has finished installing the program click <Finish> to return to your desktop. To open CPA for Windows, double-click on the CPA icon.

